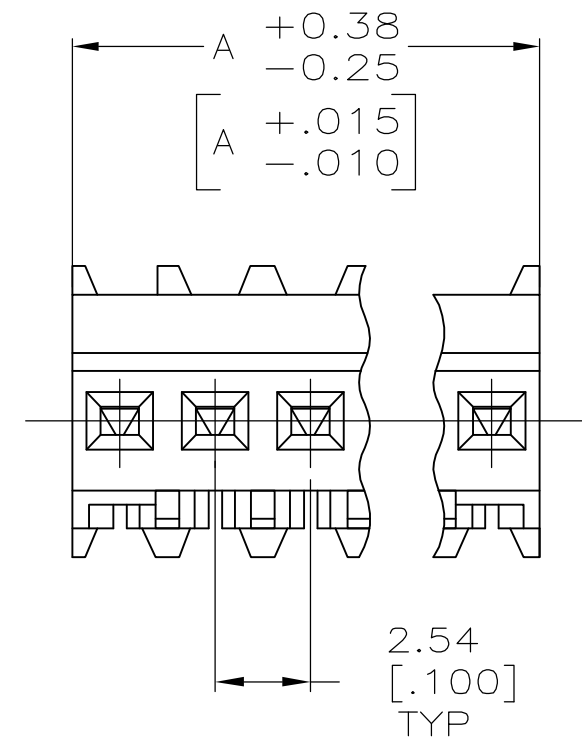
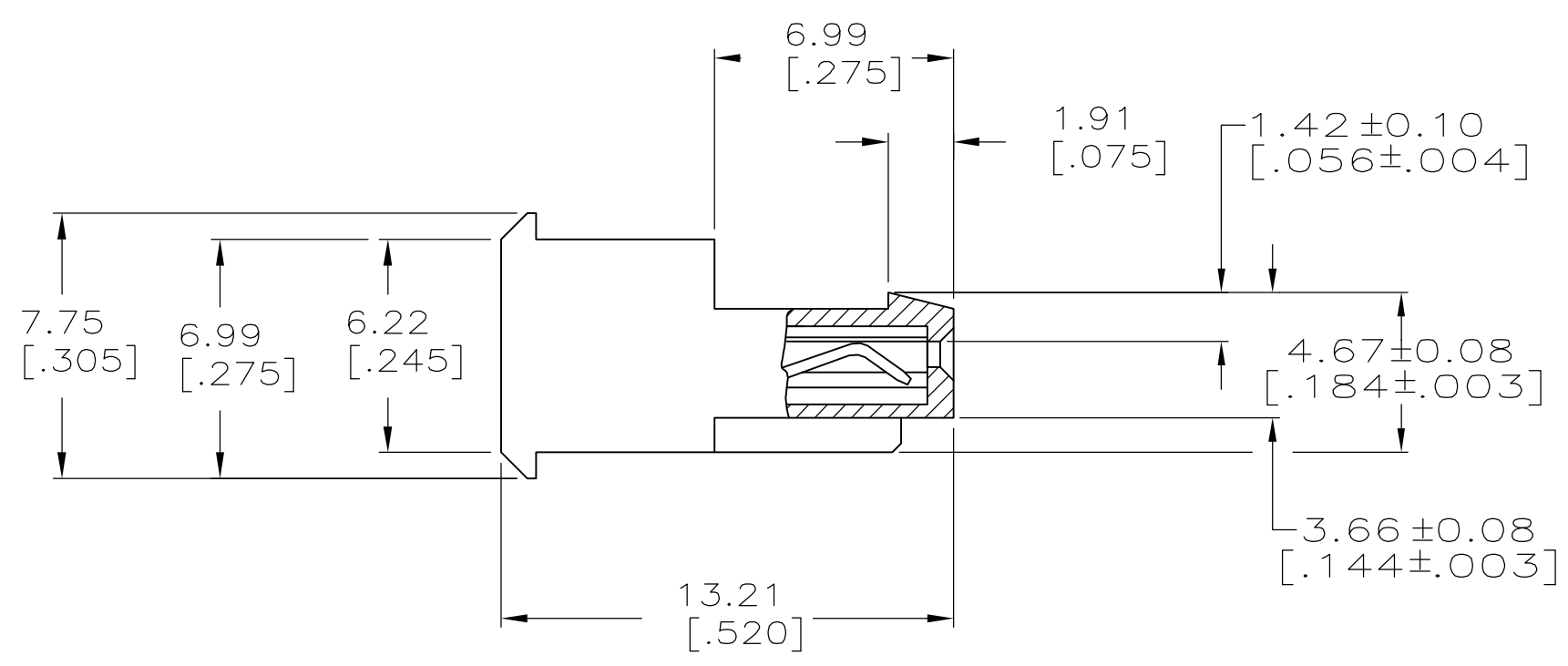
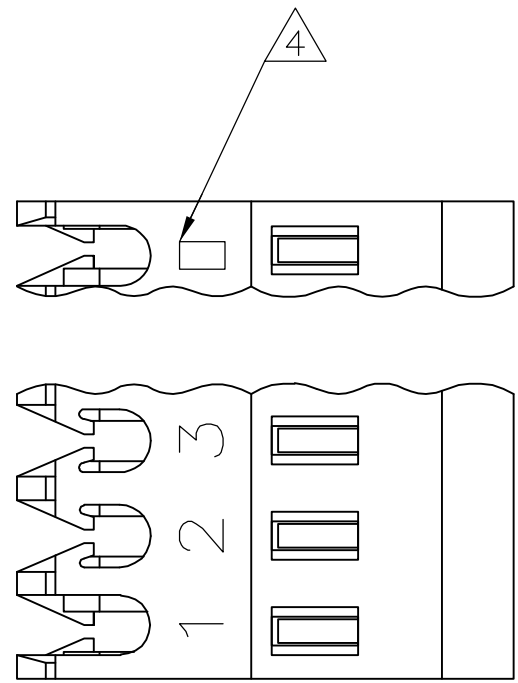


THIS DRAWING IS UNPUBLISHED. RELEASED FOR PUBLICATION
 © COPYRIGHT BY TYCO ELECTRONICS CORPORATION. ALL RIGHTS RESERVED.

LOC	DIST	REVISIONS					
CM	00	P	LTR	DESCRIPTION	DATE	DWN	APVD
		B		REVISION PER ECO-07-003724	23FEB07	KW	DB



LEAD FREE	38.10	[1.500]	15	4-644575-5
	35.56	[1.400]	14	4-644575-4
	33.02	[1.300]	13	4-644575-3
	30.48	[1.200]	12	4-644575-2
	27.94	[1.100]	11	4-644575-1
	25.40	[1.000]	10	4-644575-0
	22.86	[.900]	9	3-644575-9
	20.32	[.800]	8	3-644575-8
	17.78	[.700]	7	3-644575-7
	15.24	[.600]	6	3-644575-6
	12.70	[.500]	5	3-644575-5
	10.16	[.400]	4	3-644575-4
	7.62	[.300]	3	3-644575-3
	5.08	[.200]	2	3-644575-2

CONTAINS LEAD	38.10	[1.500]	15	1-644575-5
	35.56	[1.400]	14	1-644575-4
	33.02	[1.300]	13	1-644575-3
	30.48	[1.200]	12	1-644575-2
	27.94	[1.100]	11	1-644575-1
	25.40	[1.000]	10	1-644575-0
	22.86	[.900]	9	644575-9
	20.32	[.800]	8	644575-8
	17.78	[.700]	7	644575-7
	15.24	[.600]	6	644575-6
	12.70	[.500]	5	644575-5
	10.16	[.400]	4	644575-4
	7.62	[.300]	3	644575-3
	5.08	[.200]	2	644575-2

DIM A	NO. OF POSN	ASSEMBLY
-------	-------------	----------

⚠ MATERIAL: CONNECTOR-NYLON UL94V-0 (BLACK)
 CONTACTS-0.30 [.012] THICK COPPER ALLOY
 BRIGHT TIN-LEAD 0.00203 [.000080] MIN THICK FOR CONTACTS
 644575-2 THRU 1-644575-5
 MATTE WHISKER MITIGATED TIN PLATE 0.00203 [.000080] MIN THICK
 OVER 0.00076 [.000030] MIN THICK NICKEL FOR CONTACTS
 3-644575-2 THRU 4-644575-5

2. CONTACTS ACCEPT 22 AWG WIRE WITH 1.52 [.060] MAX INSULATION DIAMETER.

3. CONTACTS MUST ACCEPT 0.64±0.03 [.025±.001] SQUARE POST AND REMAIN LOCKED IN POSITION.

⚠ IDENTIFICATION NUMBER FOR LAST CIRCUIT MAY NOT APPEAR ON ALL ASSEMBLIES.

5. DIMENSIONS IN BRACKETS ARE IN INCHES.

6. HOUSING FEATURES ARE: FEED THRU WITH LOCKING RAMP.



THIS DRAWING IS A CONTROLLED DOCUMENT.

DIMENSIONS: mm [INCHES]	TOLERANCES UNLESS OTHERWISE SPECIFIED: 0 PLC ± 1 PLC ± 2 PLC ± 0.13 [.005] 3 PLC ± 4 PLC ± ANGLES ± FINISH ⚠	DWN S. HOOVER 03-DEC-2004 CHK D. BOSSI 03-DEC-2004 APVD D. BOSSI 03-DEC-2004	tyco Electronics Tyco Electronics Corporation Harrisburg, Pa 17105-3608
MATERIAL ⚠	PRODUCT SPEC 108-1050 APPLICATION SPEC 114-1019	NAME MTA .100 CONNECTOR ASSEMBLY 22 AWG, UL94V-0, SPECIAL	SIZE A2 CAGE CODE 00779 DRAWING NO C=644575 RESTRICTED TO
CUSTOMER DRAWING		SCALE 5:1	SHEET 1 OF 1 REV B